

## BATTERY BACK-UP SMPS

### KRP-BB-100-XX

The KRP-BB-100 series is one of KRITSNAM's enclosed Battery Back-up power supplies. It functions from a wide AC input range and at the same time accepts Battery input dc voltage. When ON mains, it delivers around 80 Watts of power to the load, and also keeps the battery in fully charged conditions using constant current charging of **1.5 Amps**. Upon failure of mains the battery is automatically connected to the load in Zero transfer time. The unit prevents the battery from deep discharge by automatically disconnecting the battery from load if the battery voltage falls below the deep discharge level. The unit comes with a host of protection features like overload, short circuit, input under voltage, Battery reverse polarity, etc. making it a totally full proof system.

#### Salient Features:

- Input 180 to 280V AC operating range
- Can provide continuous Power of 100Watts at +60°C ambient.
- Low Standby Power Consumption and High Efficiency
- Input under voltage protections (141VAC)
- Output short circuit, over-load, over-voltage protection
- Can be mounted both Vertically and Horizontally with Panel Mount.
- Leading supplier for major OE manufactures.
- All our products come with a 1-year warranty against all manufacturing defects

#### Ordering Code:

### KRP-BB-100-XX

↓ ↓ ↓ ↓

1 2 3 4

1	COMPANY'S NAME & Single Phase input
2	BATTERY BACK-UP
3	RATED OUTPUT POWER
4	RATED OUTPUT VOLTAGE

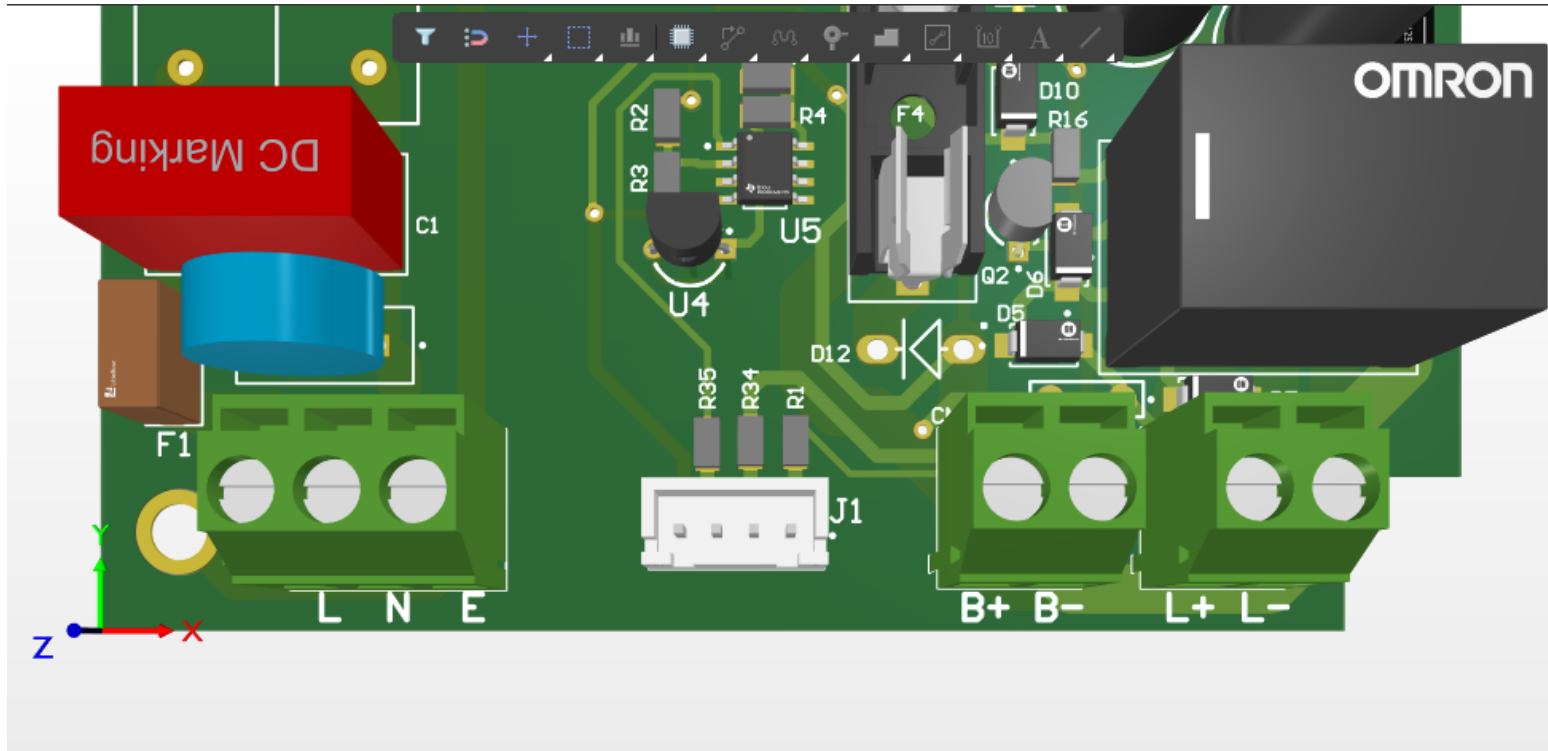
## SPECIFICATIONS:

MODEL		KRP-BB-100-12	KRP-BB-100-24
OUTPUT	DC Voltage	13.8V	27.6V
	Load Current	6A	3A
	Battery charging current	1.5A	1.5A
	Rated Power	100W	100W
	Ripple & Noise	150mVp-p	150mVp-p
	Line Regulation	± 1%	
	Load Regulation	<1% (180-280VAC)	
	Setup, Rise Time	1000ms, 90ms/280VAC 2000ms, 90ms/230VAC at full load	
	Hold Up Time (Typ.)	20 msec at 230VAC	
INPUT	Voltage Range	180 to 280VAC	
	Frequency Range	47 - 63Hz	
	Efficiency (Typ.)	>80 %	
	AC Current (Typ.)	0.9A/230VAC	
	Inrush Current (Typ.)	35A at 230VAC	
	Leakage Current	<3.5mA/ 240VAC	
PROTECTION	Overload	Shutdown type unit restarts after recycling the mains	
	Overvoltage	Protection type: Shut down o/p voltage, re-power on to recover	
	Battery Low	10V ± 0.8V	20V ± 1V
ENVIRONMENT	Working Temperature	-10 ~ +60 °C (Refer to "Derating Curve")	
	Working Humidity	20 ~ 90% RH non-condensing	
	Storage Temp., Humidity	-20 ~ +85 °C, 10 - 95% RH	
	Temp. Coefficient	+0.03%/°C (0 - 50 °C)	
	Vibration	10 - 500Hz, 2G 10min./1cycle, 60min. each along X, Y, Z axes	
EMC & SAFETY	Safety Standards	Designed as per UL950	
	Withstand Voltage	2.5KV	

EMC Emission	pending
EMC Immunity	Pending
Dimension	130*100*40mm (L*W*H)

**MECHANICAL DRAWING:**





**INDICATION PCB:**

